

# CUBE MIRROR CABINET /

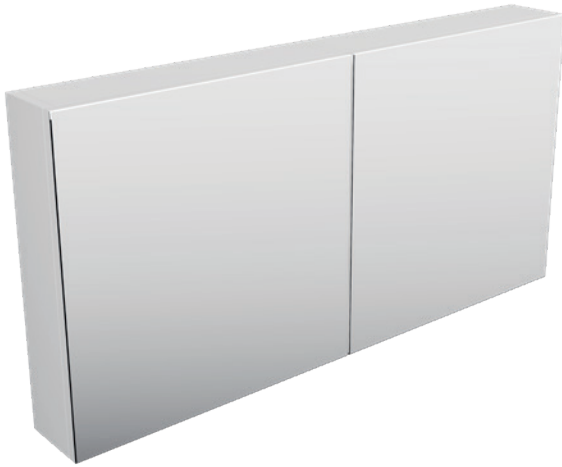
*Michel César*

## DESCRIPTION

Cube Mirror Cabinet 1000, 2 Doors, 4 Shelves

## PRODUCT CODE

M1000 / M1000T / M1000CC



Dimensions W 1000 x H 500 x D 120 (mm)

Finishes Timber Veneer or White Gloss or Custom Paint

Handleless Handleless finger pull design

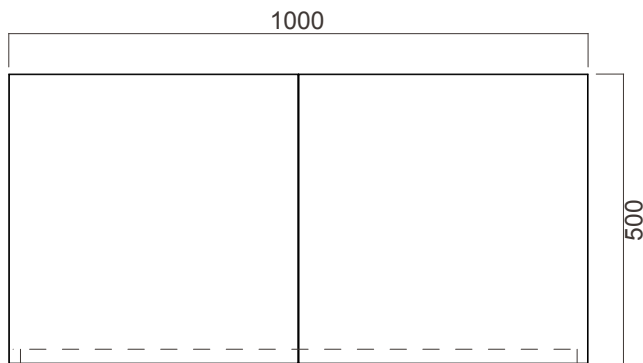
Origin New Zealand made cabinetry

Features

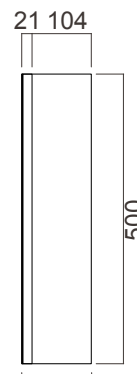
- 2 Doors, 4 shelves (2 adjustable).
- Paint - The paint used on our products is polyurethane or UV based.
- Timber Veneer - As a natural product, each has natural variation in grain and colour.
- Can be recessed into a wall by a qualified tradesperson.

## TECHNICAL DRAWINGS

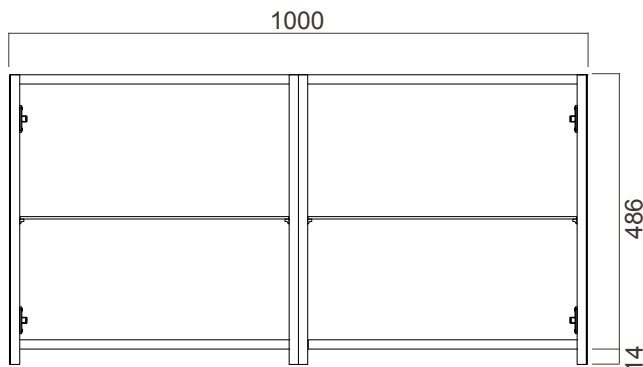
Front



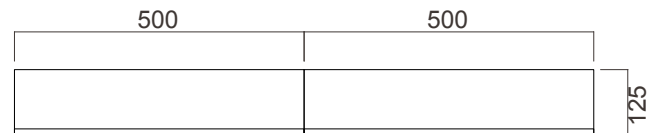
Side



Shelves



Top Down



## NOTES

\*Additional Cost. Accessories not included. Drawing indicates the technical measurement only and is not a reflection of how the product will look. Sizes are nominal only. All drawings in millimeters. Drawings not to scale. Sept 2024.